



KYOTO UNIVERSITY OF ART & DESIGN

学校法人 瓜生山学園

京都造形芸術大学

PRESS RELEASE

July 1st, 2014

The 6th Entrance Lounge Special Exhibition

“Nishijin Sky : Teresita Fernández + HOSOO”

Thursday, October 2, 2014 – Friday, January 16, 2015



Teresita Fernández “Golden (Onyx Sky)”

2014 / 64 x 80 inch / gold chroming and India ink on wood panel

Kyoto University of Art & Design (“KUAD,” Sakyo-ku, Kyoto, Japan/President: Kazuo Oike) is pleased to announce a special exhibition, “Nishijin Sky : Teresita Fernández + HOSOO” which is scheduled to open on Thursday, October 2, 2014 in the Entrance Lounge on the First Floor of KUAD’s Ningen-kan.

Teresita Fernández is a contemporary artist who creates large-scale sculptures and site-specific art works in response to landscape and natural phenomena.

For this project, Fernández has collaborated with Masataka Hosoo, the twelfth generation of the Hosoo Family. Founded in 1688, Hosoo specializes in traditional weaving based in Nishijin, Kyoto. Nishijin weavers have historically created Kesa (monks’ garments) and Obi (kimono sashes) by interweaving silk with finely shredded gold-coated Washi (Japanese paper). Today, leading designers all over the world admire Hosoo’s ability to merge traditional weaving with state-of-the-art technology to generate intricate patterns.

For “Nishijin Sky” Fernández has created a luminous golden landscape that recalls a horizon of rising and falling water surrounded by an atmospheric, darkness that recalls cinematic dissolves and film projections. To interpret this image, Hosoo has developed and invented a weaving machine that exists

in no other place in the world. The result, a meeting of contemporary art and traditional craft, presents Fernández's image as a kinran-donsu textile (thick brocaded satin) that becomes a free-standing landscape sculpture which can be viewed on all side.

The aim of this exhibition is to showcase the unique beauty of the work yielded from the collaboration between diverse fields – a contemporary artist from the United States and a traditional master artisan from Japan — and to encourage viewers to engage in the spirit of experimentation and collaboration between diverse disciplines and cultures.

We look forward to sharing this unique collaboration and hope it will reach a wide audience.

Thank you for your interest and kind consideration.

Exhibition

- Time / Date : 9:00 a.m. – 5:00 p.m.
Thursday, October 2, 2014 – Friday, January 16, 2015
*closed between November 12 and 13, and December 27 and
January 6
- Venue : Entrance Lounge
(2-116 Uryuyama, Kitashirakawa, Sakyo-ku, Kyoto 606-8271, 1st
floor Ningen-kan, Kyoto University of Art & Design)
Tel. +81-(0)75-791-9122
- Organizer : Kyoto University of Art & Design
- Cooperation : HOSOO, LEHMANN MAUPIN, WATER AND ART
- Weaving Fabrication : HOSOO (Masataka Hosoo, Hiroshi Kanaya)
- Frame Fabrication : Kitagawa Kosakusho (Masashi Kiwagawa, Akira Kitagawa)
- Fabrication Cooperation : Kaikado (Takahiro Yagi)
- Curator : Kayo Tokuda
- Admission : Free
- Access : Take No.3 / No.5 / No.204 City bus and get off at “Kamihataecho
Kyoto Zokei Mae”
- Contact : WATER AND ART
#502 Ueda Bldg., 21 Sakaimachi Shimogyo-ku, Kyoto 6008191
Tel: +81-(0)75-746-6853 E-mail: mail@water-and-art.com
kuad-entrance.com/en
*Exhibitions at the Entrance lounge are curated by WATER AND
ART

“Hiroshi Sugimoto+Kyoto Artisans: A TIDDLERS SCHOOL”
has been held from Wednesday, April 2, 2014 to
Thursday, August 26, 2014 in the Entrance Lounge on
Floor 1 of KUAD's Ningen-kan.

http://kuad-entrance.com/en/files/sugimoto_eng_press3_0508remake.pdf

Photo: Osamu Watanabe



Artist & Artisan

Teresita Fernández / Artist



Teresita Fernández (b. 1968, Miami, Florida) is a conceptual artist best known for her prominent public sculptures and unconventional use of materials. Fernández's work is characterized by an interest in perception and the psychology of looking. Her experiential, large-scale works are often inspired by landscape and natural phenomena as well as diverse historical and cultural references.

Fernández's large-scale commissions include recent site-specific works at Louis Vuitton locations in Shanghai and Paris. Additional site-specific installations include Amethyst Cinema at the Galerie Pfriem at SCAD, France, and Blind Blue Landscape at the renowned Benesse Art Site in Naoshima, Japan.

Appointed by President Obama, Fernández served from 2011-2014 on the U.S. Commission of Fine Arts, a federal panel that advises the President, Congress, and governmental agencies on national matters of design and aesthetics.

The artist opened an immersive, large-scale exhibition at MASS MoCA in May 24, 2014.

Masataka Hosoo / Director, HOSOO



HOSOO is a Kyoto-based textile company founded in 1688 and specialised in superior quality fabrics for high-end interior design and fashion.

HOSOO's history can be traced back to the Kyoto silk industry of the sixth century and the company is today widely acknowledged for its exceptional skills within traditional Japanese three-dimensional weaving techniques and for applying richly textured Nishijin weaving to contemporary design. Popularised by the nobles of the Imperial Courts of Kyoto and the samurai class, Nishijin is a special yarn dyeing and weaving technique developed over 1,200 years ago that is used for garments such as kimonos.

HOSOO fabrics are globally available to furniture manufacturers, architects, interior designers and fashion designers through the HOSOO headquarters in Kyoto, Japan. References include Dior and Chanel boutiques worldwide by Peter Marino Architect (US), the Hyatt Regency Kyoto Hotel by the interior design practice Super Potato (JP) and fashion designer Mihara Yasuhiro for his AW2012 men's collection.

**“Nishijin Sky : Teresita Fernández + HOSOO”
Image Loan Application**

To: WATER AND ART
mail@water-and-art.com

For this exhibition, there are 12 images available on loan for promotional purpose. For permission to use any of these images, please complete the form below and return it via E-mail.

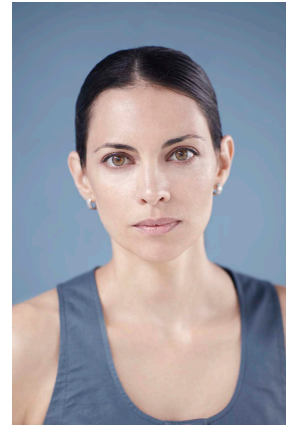
- Image (A-L) must be reproduced with the caption and credit.
- Please refrain from cropping. During layout, please avoid laying type over the image.

Application date	/ /	
Applicant	Company / Occupation	
	Name	
	Address	
	Contact	Tel Fax E-mail
Media	Type <input type="checkbox"/> TV <input type="checkbox"/> Radio <input type="checkbox"/> Newspaper <input type="checkbox"/> Magazine <input type="checkbox"/> Other ()	
	Name of program or publication	
	Planned Date of sale / broadcast	
Requested image	A B C D E F G H I J K L	

Submissions: Please submit a project proposal or other description outlining your proposed coverage. Following the press tour, please send drafts/proofs etc. to enable confirmation of the information included, and also copies of eventual coverage (magazine/newspaper articles, DVDs, CDs, etc.).

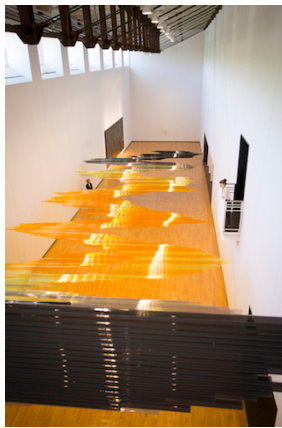
Press Contact:

R. Fukao / S. Kawashima, WATER AND ART
Tel: +81-(0)75-746-6853 / E-mail: **mail@water-and-art.com**



A. Teresita Fernández
 “Golden (Onyx Sky)” 2014
 gold chroming and India ink on wood panel
 64 x 80 inch

B. Teresita Fernández
 photo : Noboru Morikawa



C. Teresita Fernández
 “Black Sun” 2014
 polycarbonate tubes installation
 dimensions variable

D. Teresita Fernández
 “Black Sun” 2014
 polycarbonate tubes installation
 dimensions variable



E. Teresita Fernández
 “Black Sun” 2014
 polycarbonate tubes installation
 dimensions variable

F. Teresita Fernández
 “Rorschach” 2014 Detail
 fused nylon, gold chroming
 6.5x61.857x25.65 inches



G. Teresita Fernández
“Rorschach” 2014 Detail
fused nylon, gold chroming
6.5x61.857x25.65 inches



H. Teresita Fernández
“Golden (Scroll 1)” 2014
gold chroming and india ink on wood panel
1 x 9 ft



I. Masataka Hosoo
Director, HOSOO



J. HOSOO
“Starry Indigo” 2014
85% Silk, 10% Paper, 5% Polyester



K. HOSOO
“Wave 2” 2014
65% Silk, 35% Paper



L. HOSOO
“Wave 2” 2014
65% Silk, 35% Paper